

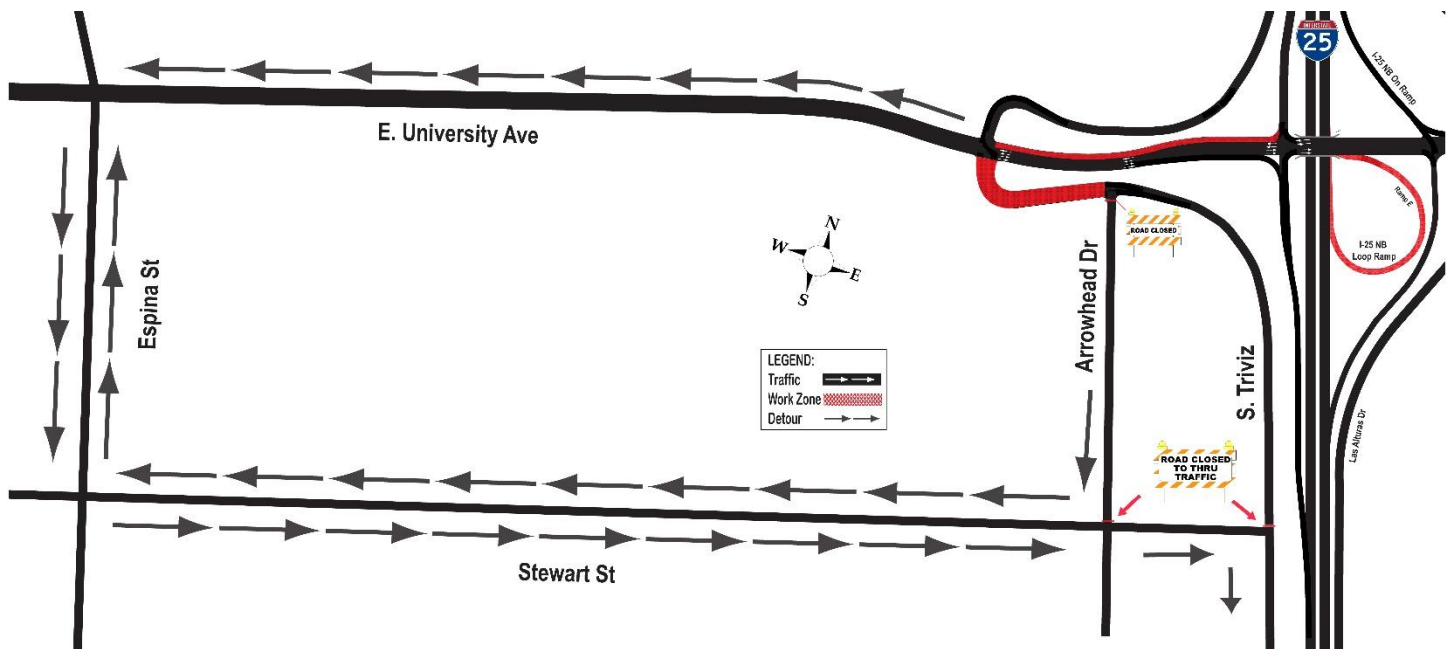


Reminder: Triviz Drive to Be Closed from University to Arrowhead Beginning Tues., Jan. 12, 2021

NOTE: All work is scheduled weather permitting, and is subject to change without notice.

NEW: On Tuesday, Jan. 12, 2021, crews are scheduled to reopen Triviz Drive between the University and Wisconsin intersection and close Triviz Drive from Arrowhead to University for about 3-4 weeks.

Traffic will be detoured on East University to South Espina Street, then to Stewart Street. (See Map below)



MOTORISTS SHOULD USE AN ALTERNATE ROUTE OR EXPECT DELAYS, PARTICULARLY DURING MORNING AND AFTERNOON RUSH HOURS. *Thank you for your patience during construction!*

Regular work hours are **Monday-Friday 7 a.m.-5 p.m.** although crews may work longer hours or on Saturdays as needed.

Questions, Concerns: Visit www.i25-university.com or www.nmroads.com or contact Patti Watson – pattiw@cwastrategic.com; 505-269-9691 cell.