



## Construction Update: Oct. 26-Nov. 1, 2020 As of Friday, Oct. 23, 2020

*NOTE: All work is scheduled weather permitting, and is subject to change without notice.*

**NEW:** The right lane of southbound I-25 is closed from Missouri to north of the I-25 University Bridge and the left lane of northbound I-25 is closed from north of the I-25 University Bridge for about 1,500 feet for installation of foundations for overhead signs. *This work is expected to last about two weeks, through late October.*

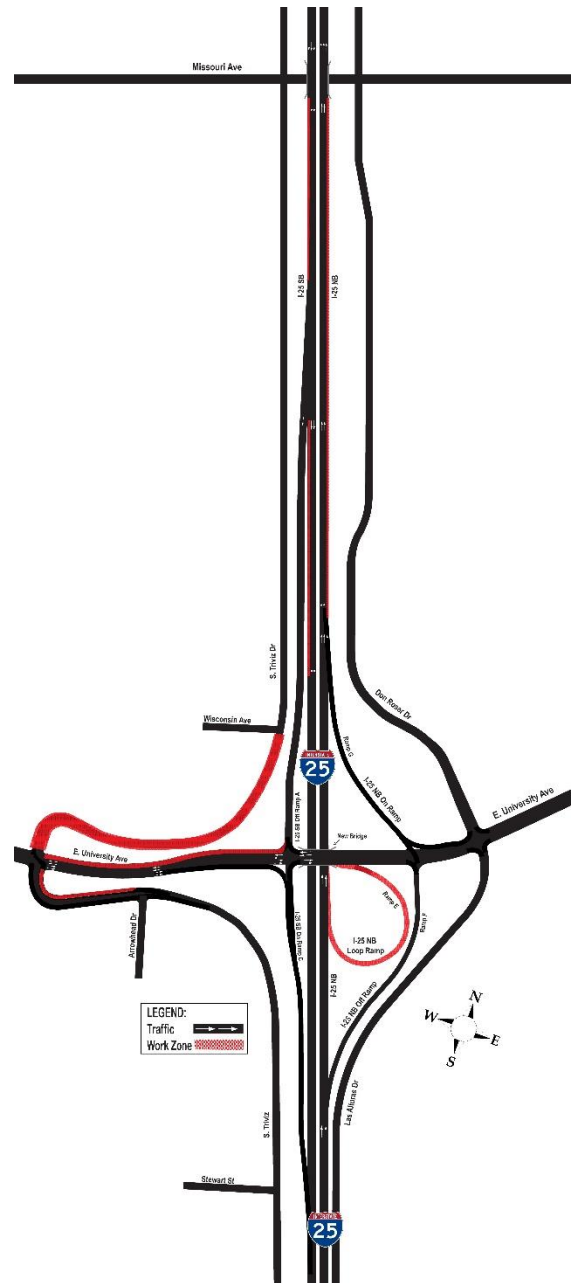
Lasting through **Monday, November 2**, the I-25 northbound loop ramp will be closed for traffic safety. Both eastbound and westbound traffic on University Avenue can access northbound I-25 from the on-ramp at the traffic signal.

**CONTINUING:** Triviz Drive is closed between the University intersection and Wisconsin through December 2020 or January 2021 for construction of the north roundabout and installation of water and gas lines. Traffic is detoured to Missouri, Solano Drive, then back to University Avenue. **Access will be maintained to the hotels and the Plaza from Locust to Wisconsin.**

The right lane of Triviz Avenue is closed from Arrowhead to the University intersection **through late October or early November.**

**Through late October or early November**, south Triviz Drive is closed from Arrowhead Drive to Stewart Street so crews can work on the south roundabout. Also closed are the direct connections to the New Mexico State University parking lots from I-25 and north Triviz Drive. Motorists can use Stewart Street and Arrowhead Drive to access South Triviz Drive, University Avenue and the parking lots during this closure.

**MOTORISTS SHOULD USE AN ALTERNATE ROUTE OR EXPECT DELAYS, PARTICULARLY DURING MORNING AND AFTERNOON RUSH HOURS. Thank you for your patience during construction!**



Regular work hours are **Monday-Friday 7 a.m.-5:30 p.m.** although crews may work longer hours or weekends as needed. **Questions, Concerns:** Visit [www.i25-university.com](http://www.i25-university.com) or [www.nmroads.com](http://www.nmroads.com) or contact Patti Watson – [pattiw@cwastrategic.com](mailto:pattiw@cwastrategic.com); 505-269-9691 cell.